

CERTIFICATE OF LOCATION OF GOVERNMENT CORNER

NORTHEAST Corner of Section 32, Township 107N, Range 40W

5th Principal Meridian, State of Minnesota, County of Murray.

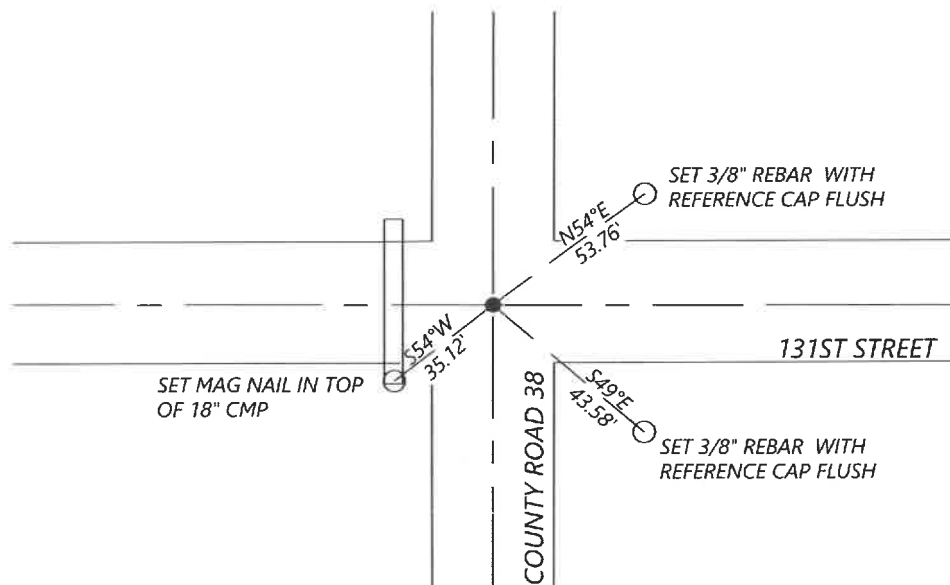
At the corner location shown on the sketch:

☒ On 10/21/2021 found a MAG NAIL AT THE SURFACE, REMOVED TEMPORARILY AND FOUND A 3/4" REBAR 0.5' BELOW
DATE
THE ROAD SURFACE.

☒ left monument as found ☐ lowered monument ☐ removed monument (explain)

☐ On DATE placed a _____

SKETCH OF REFERENCE TIES



N.T.S.

Statement of evidence for this corner location is on back of this page.

I hereby certify that this document was researched and prepared by me or under my direct supervision and that I am a licensed Land Surveyor under the laws of the State of Minnesota.

Signature [Signature]

Date 4-18-2022 License No. 57085

Title:

☒ Land Surveyor ☐ Professional Engineer
☐ County Surveyor ☐ County Engineer

OFFICE OF THE COUNTY RECORDER

County of Murray

I hereby certify that this document was filed in the Co.

Recorder's office at _____ M. on the
22nd day of April A.D. 20 22

County Recorder [Signature]

by _____, Deputy

DOCUMENT NO. _____

SETH WECKMAN
Minnesota License No. 57085

Statement of Evidence:

Northeast corner of Section 32, Township 107 North, Range 40 West, 5th Principal Meridian, Murray County, Minnesota.

1861 Lewis Brockman, U.S. Deputy Surveyor, set a post in mound.

1936 Unknown entry, survey shows stone at corner location.

Undated Unknown entry, survey shows stone, pop bottle, and brick bolts.

Undated J.W. Woolstencroft, survey shows stone, pop bottle, and two pieces of wire cable 2ft long.

1982 Unknown insert from Murray County, found a concrete monument 11" below grade, placed a railroad spike above monument.

1997 Unknown insert from Murray County, placed a P.K. nail at corner location.

2015 Unknown insert from Murray County, placed a mag nail in asphalt after 2015 overlay, 1.5ft West of the North/South road centerline. Coordinates shown are:

N 168763.381

E 527196.997

2021 Westwood Professional Services searched the area and found a mag nail in the road surface. The field crew searched below the mag nail and found a 3/4" rebar, 0.5ft below the road surface. The found monument is +/- 1.5ft West of the North/South road centerline and on-line with the road centerline East/West. Accepting the found rebar as the corner position.

Analysis of the recovered data, field evidence and survey measurements, indicates that the monument found is the correct perpetuation of this corner. For additional information concerning this corner please contact Westwood Professional Services.